

**BROWNFIELD REDEVELOPMENT IN THE EU**

**LISBON**

# **Park of Nations: an example of urban regeneration of a brownfield site**

**Marta Rodrigues**

**Directorate General for Territory**

**Minister of Environment and Energy Transition**

# STARTING POINT



Vasco da Gama, Gregório Lopes, 1524

Monsieur Jacques Sol-Rolland  
Président  
Bureau International des Expositions  
56, avenue Victor Hugo  
Paris 75783  
FRANCE

Monsieur le Président,

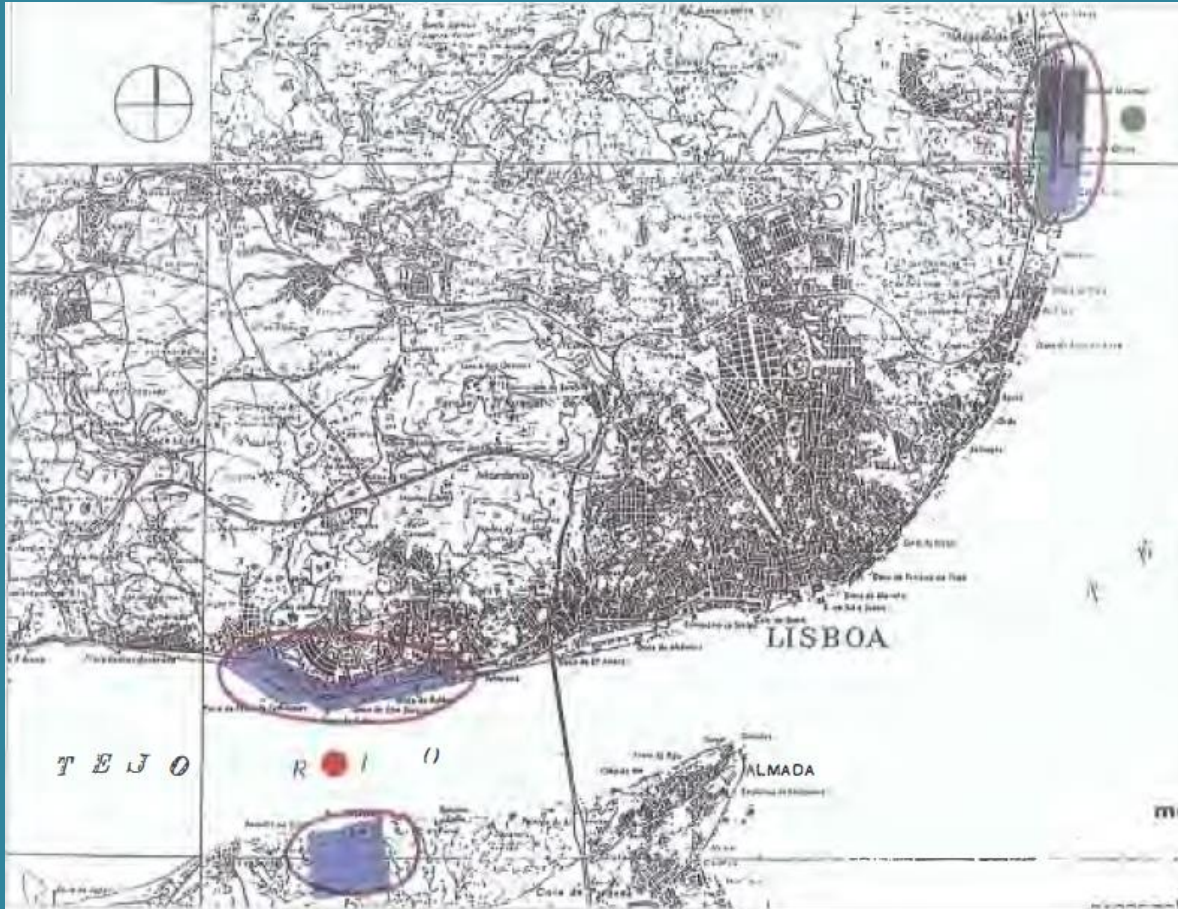
J'ai l'honneur de vous faire part de l'intention du Gouvernement portugais d'organiser, en 1998, une exposition internationale dont le thème serait la célébration du 500ème anniversaire du voyage de Vasco da Gama qui le premier découvrit la route des Indes.

Le projet de l'exposition a été préparé par la Commission nationale pour les Commémorations des Découvertes portugaises, créée par le Gouvernement portugais, qui d'ici à l'an 2000 travaillera à la mise-en-œuvre de projets qui visent renforcer le dialogue culturel, scientifique, économique et civilisationnel entre l'Europe et les autres continents, dans l'esprit qui a amené les navigateurs portugais à croiser les mers, voici plus de cinq cent ans.

COMISSÃO NACIONAL PARA AS COMEMORAÇÕES DOS DECOBRIMENTOS PORTUGUESES	
SECRETARIA	
ENT.:	2599
DATA:	11.02.89
FRCC:	12.18/29.2(50.5)

Letter to the president of the International Exhibition Bureau

# Where to locate the great Word Exhibition?



Previous place of  
1940 World  
Exhibition

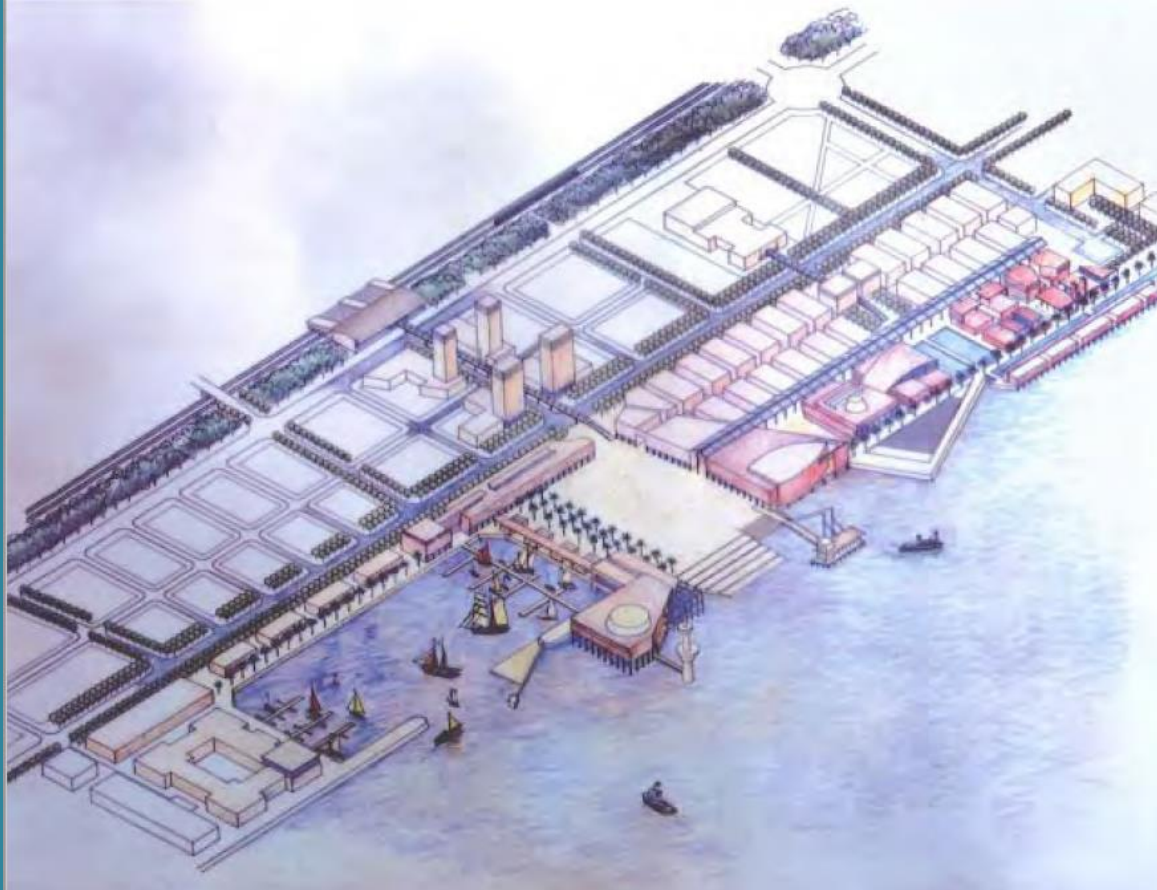
Expectant place  
across the river

Abandoned  
brownfield area in  
the eastern part of  
the city



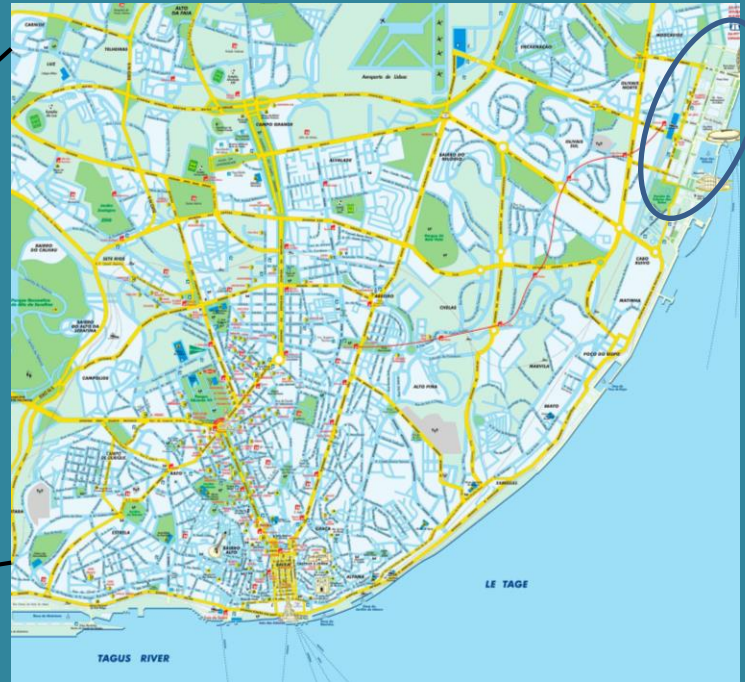
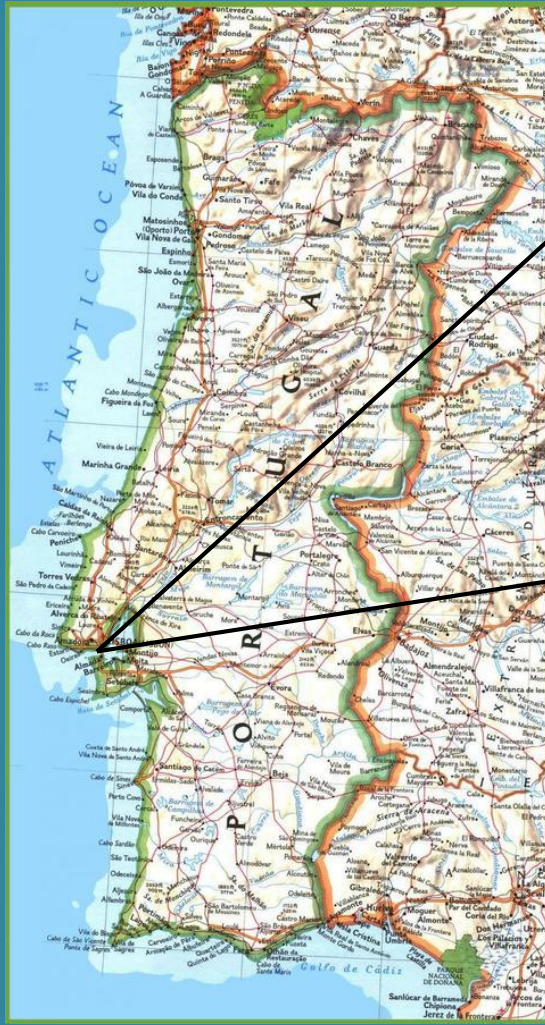
# DREAM HIGHER

Choose a place with a higher potential for the city to grow without an increase of soil sealing



Expo'98 História de um Território Reinventado

# WHERE?



# Which kind of place was that place?



# A complex web of uses Without any spatial planning





Photos Bruno Portela





Photos Bruno Portela

## Forth Large oil companies (Petrogal, Shell, Mobil and BP) Oil refinery



## Harbour installations 15.000 Abandoned containers

Photos Bruno Portela





Photos Bruno Portela

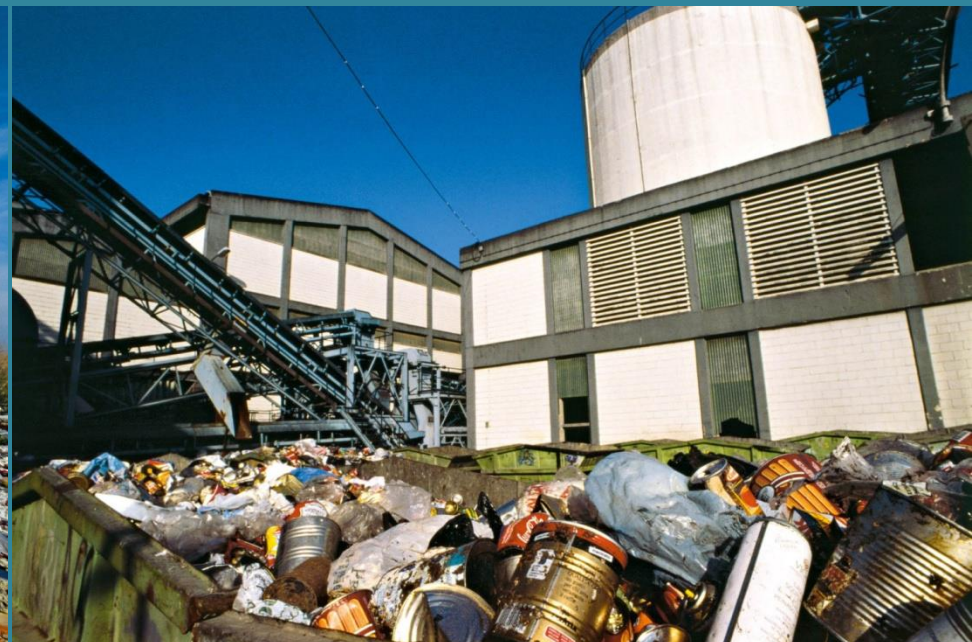
## Illegal housing Slums





Photos Bruno Portela





Photos Bruno Portela

## Dumps



Photos Bruno Portela

## Scrap metal





Photo Bruno Portela

Even a navy deposit



## Slaughterhouse

Expo'98 História de um Território Reinventado





Expo'98 História de um Território Reinventado

## Trancão known as the most polluted river in Europe



# GOALS AT THE 90'S FOR 2005

10.000 houses  
21.000 inhabitants  
22.500 work posts



# Could the scenario be challenger?



# Deal with a complex government process



# A STRONG COMMITMENT

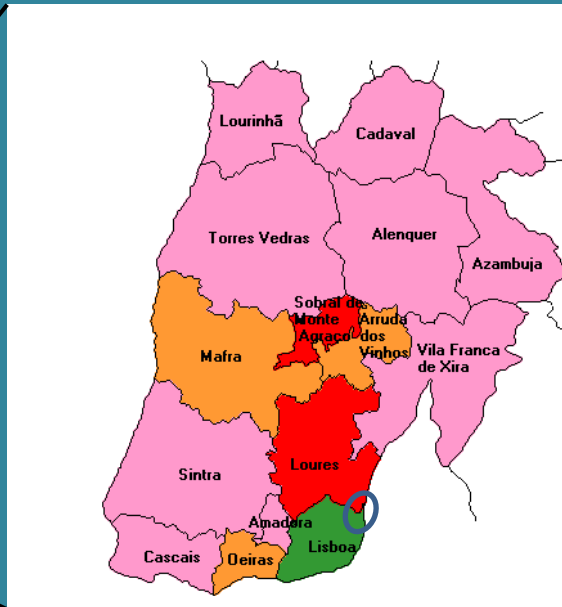
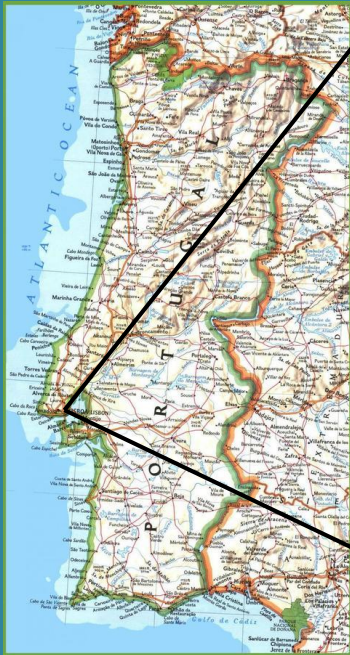
340 hectares  
belonging two different  
municipalities

60% Lisbon and 40% Loures

From different  
political parties

And a national government  
from  
an even different political  
Party

Private and public land  
Several uses



# GET FUNDING TO CARRY OUT THE DREAM





# HOW COULD COST SUCH DREAM?

## Optimistic scenario

**Cost        2.000.000.000 Euros**

**Revenue 1.700.000.000 Euros**

---

**- 300.000.000 Euros**

# Step by Step...

Relocate the inhabitants

Negotiate with oil companies

Relocate small and medium size industries

Decontaminate the soil, with the hydrocarbons levels surpassed the limits admitted for residential use

Demolish the existing industrial structures

Dismantled structures and moved to other places in the metropolitan area

# «*Think ephemeral as definitive*»

Creation of a publicly owned corporate entity – PARQUE EXPO S.A.

Development of an Urbanization Plan

Learning with Seville World Exhibition experience

Mobilization the “diplomatic machine” to bring as many foreign participants as possible

# Critical success factors

Thinking in terms of a multifunctional urban structure of high environmental and urban quality (housing, offices, commercial areas, public spaces, recreation, leisure and science)

Great bet on accessibilities (train station, metro, buses)

Have a vision for the landscape -Taking advantage of the relationship with the river Tagus

# GET STARTED



Photo Global Imagens, Reuters e TSF





Photos Global Imagens, Reuters e TSF



Photos Global Imagens, Reuters e TSF



# 1998

## OPEN THE DOORS



Photo Global Imagens, Reuters e TSF

# THE METAMORPHOSES HAS HAPPENED



Photos Global Imagens, Reuters e TSF



# From 22nd of may to 30th of September



Photos Global Imagens, Reuters e TSF

# THE NUMBERS OF EXPO

- ✓ 30.000 new trees
- ✓ 70.000 new shrubs
- ✓ 340 hectares completely transformed
- ✓ The most participated exhibition ever
- ✓ 160 countries and organizations
- ✓ 12.000.000 visitors

# POST EXHIBITION

## Continue to working

### Do everything to avoid the emptiness





- ✓ New uses for the same buildings
- ✓ Enhancing uses
- ✓ Restaurants, bars and shops
- ✓ Sales of plots for construction
- ✓ Hotels
- ✓ Marine
- ✓ Big companies
- ✓ Private Hospital
- ✓ Schools
- ✓ Church
- ✓ Several services and infrastructures of the latest generation
- ✓ Universities
- ✓ Museum
- ✓ Oceanarium
- ✓ Residential and public spaces

Before the deadline (2009), the generality of the plots were selling, and the respective buildings built.

Global urban regeneration was done above the entire Brownfield

340 hectares were completely transformed

In 2013 the neighbourhood was constituted as a civil parish



# NATIONS PARK

*«The box of Lisbon garbage has become one of its most noble areas»*

Expo'98 História de um Território Reinventado





# WHAT ABOUT THE Optimistic scenario

Cost 2.000.000.000 Euros

Revenue 1.700.000.000 Euros

---

-300.000.000 Euros

???

# 2002 AVALIATION!

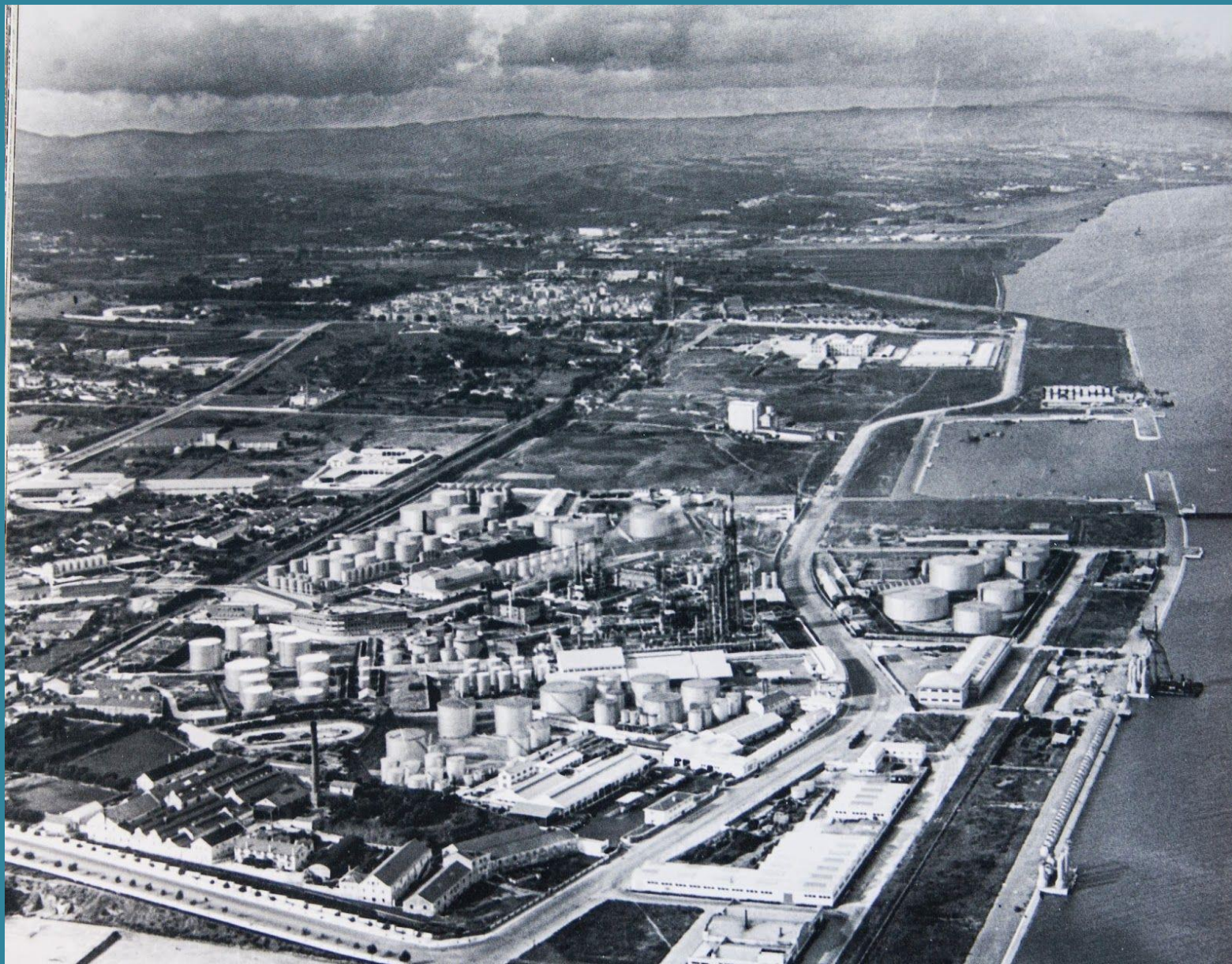
**Cost 2.000.000.000 Euros**

**Revenue 4.435.000.000 Euros**

---

**+2.435.000.000 Euros**





Photos <http://lisboahojeontem.blogspot.com>





Photos <http://lisboahojeeontem.blogspot.com>





Photos <http://lisboahojeeontem.blogspot.com>



# GET NEW CHALLENGES

## anístico boleia da JMJ

Sacavém e Bobadela tenham obras, pois são as mais próximas do recinto — a estação do Oriente fica a quatro quilómetros. Para isso será preciso envolver, pelo menos, a Infra-Estruturas de Portugal. “Ainda está tudo numa fase muito preliminar”, diz uma fonte da autarquia de Loures.

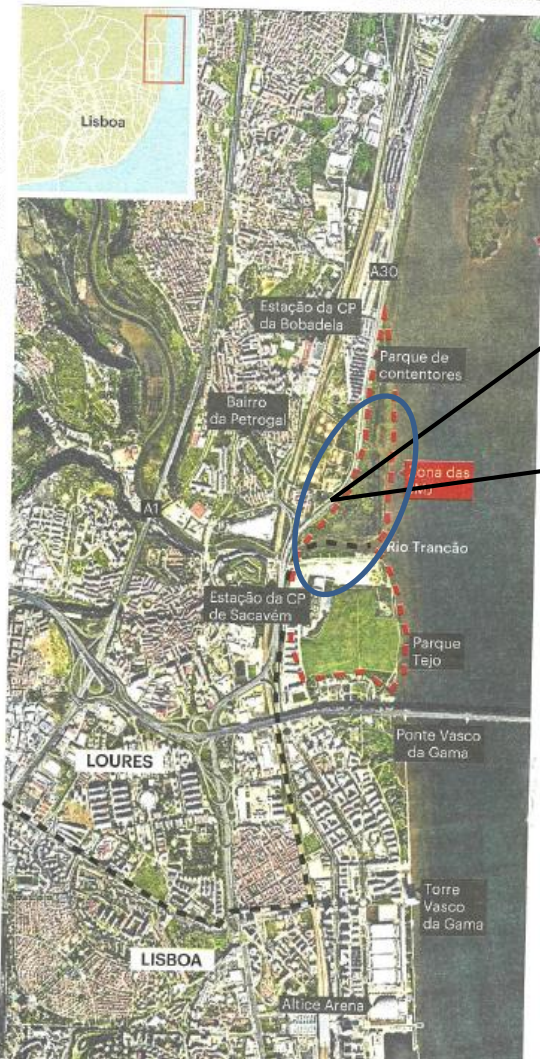
Baseado em anteriores JMJs, o recinto lisboeta foi idealizado como uma gota de água que cai e provoca ondas. O palco está ao centro, num sítio em que o terreno é mais elevado, e os fiéis concentram-se à volta dele em círculos. Do palco até ao extremo do recinto vai uma distância de 1,1km.

### Aterro

A zona principal, onde ficará o palco, vai ser no concelho de Lisboa, onde por baixo existe o aterro sanitário de Beirilão, selado antes da Expo. “O aterro, conforme previsto no seu projecto, está ainda em processo de estabilização, o que não impede a sua adaptação para utilização enquanto espaço público de recreio e lazer, à semelhança de aterros semelhantes noutros locais”, assegura a Câmara de Lisboa. E prevendo-se cerca de um milhão de pessoas na JM, o terreno aguenta com tanta gente? “O projecto original de selagem do aterro foi elaborado prevendo o usufruto deste equipamento pelo público como elemento integrado no Parque do Tejo e do Trancão”, responde a autarquia.

Para lá do Trancão, já em Loures, o recinto para assistir às celebrações prolonga-se ao longo do Tejo e, do outro lado do IC2, ficará o campismo para 7000 pessoas e um parque de estacionamento para 3750 carros. Esses terrenos, que pertencem à Galp, precisam de ser descontaminados — mas já ou só depois da JM, quando de facto for para construir algo? A Câmara de Loures ainda não consegue responder, afirmando uma fonte que o trabalho de reparação da JM só agora vai começar a sério.

## Jornada da Juventude de 2022, na fronteira de L



New use for the landfill  
Extend the process of decontamination